



Onsite

Saliva Swipe 6 Advanced

The **Onsite Saliva Swipe 6 Advanced** saliva drug screening test incorporates the latest drug groups from **Australian Standard 4760:2019**.

The all-in-one design is easy and convenient to use and requires minimal saliva. Saliva testing is the ideal test choice when 'current impairment' screening is required.

Benefits of Saliva Swipe 6 Advanced :

- EASY-TO USE AND CONVENIENT
- CLEAR, RAPID RESULTS IN MINUTES!
- COST EFFECTIVE TESTING
- NO TOILET FACILITIES REQUIRED
- MOST RAPID TEST ON THE MARKET!
- TESTS FOR CURRENT IMPAIRMENT!

ONSITE SALIVA SWIPE 6 ADVANCED TESTS FOR THE FOLLOWING:

- AMP 50 ng/mL** (Amphetamine/ Methamphetamine)
- COC 50 ng/mL** (Cocaine)
- OPI 50 ng/mL** (Opiates)
- THC (Parent) 15 ng/mL** (Marijuana)
- OXY 40 ng/mL** (Oxycodone)
- BZO 50 ng/mL** (Benzodiazepine)

Minimal Saliva Required

The all-in-one nature of the Saliva Swipe 6 means a smaller saliva sample is required. The saliva does not need to be transferred to a separate test chamber and only 2 strips are saturated with saliva in-stead of 6 or 7, thus, less saliva is needed to obtain results.

Quicker Results than Other Tests

All drug test lines are combined on 2 test strips which requiring a third of the saliva to activate than a standard 6 panel drug test.



Includes OXYCODONE and low THC level.



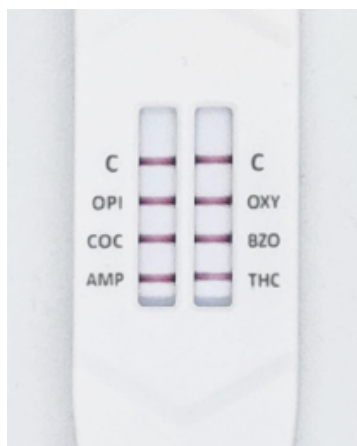
MINIMAL SALIVA REQUIRED AND FAST RESULTS!



Australian Designed

Ease-of-collection

Easy to use one step oral saliva test. Simply insert the test swab into the mouth for 1-2 minutes. Place the test on a flat surface and the saliva will run up the test strips providing results.



Clear Results

Results are clear and easy to read and appear within 2-3 minutes. Test lines are clearly labelled.

Order Code (Box of 25): OD-084

Quality Controls

Test control lines use colloidal gold technology with superior sensitivity, accuracy and precision. Cross-reactivity is pretested against most drugs and other substances.

Test Integrity

Integrity of the saliva sample is maintained due to minimal handling and exposure. The saliva sample is observed at all times preventing adulteration by the test subject. Test control lines confirm the saliva sample has flowed correctly up the test strips and the test is complete.

Comprehensive instructions and procedure cards are included to ensure testing is conducted correctly.

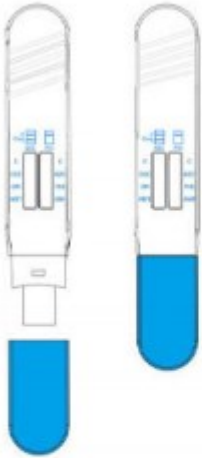
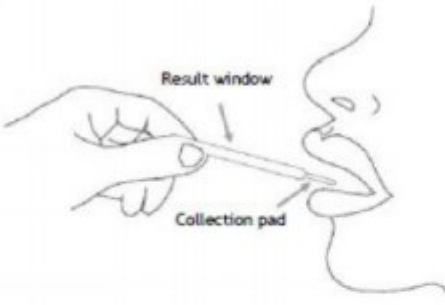
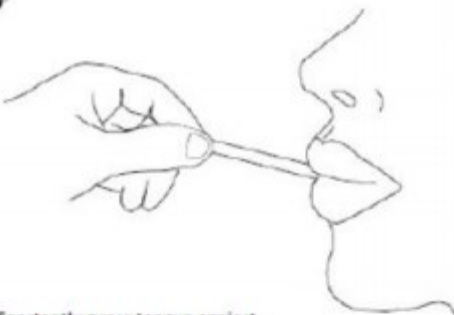
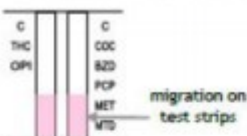
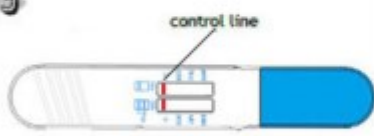


Result Confirmation

Any presumptive-positive results should be confirmed via LC/MS at a certified NATA laboratory using a second saliva sample.

Australian Designed

Cut-off levels are set for the Australian market reducing discrepancies between initial onsite testing and laboratory confirmation test results.

Onsite Saliva Swipe 6 Advanced Test Procedure

<p>1</p>  <p>Remove test device from pouch. Write ID on device then uncap to expose collection pad.</p>	<p>2</p>  <p>Result window Collection pad</p> <p>Insert collection pad into mouth with test device inserted under the tongue and hold in place with your hand at a <u>slightly</u> upward angle (approximately 15° angle).</p>
<p>3</p>  <p>Constantly press tongue against top of collection pad until removed from mouth. Do not bite, chew or pull on collection pad.</p>	<p>4</p> <p>Leave in mouth, under the tongue, for 1 minute then remove. If migration (pink color) has not reached first analyte reinsert into mouth for another 30 seconds and remove. Repeat in 30 second increments as required. Not to exceed 2 minutes 30 seconds.</p>  <p>migration on test strips</p>
<p>5</p>  <p>control line</p>  <p>REPLACE CAP. Place device on flat surface. Start timing when C (control) line appears on each strip</p>	<p>6</p> <p>Read results at 5-7 minutes after the C line appears on EACH strip. Do not compare one line intensity to another. Do NOT read after 7 minutes.</p>  <p>NEGATIVE POSITIVE INVALID</p> <p>Negative results— Indicated by the presence of 2 lines. No matter how dark/light</p> <p>Presumptive positive— only the top 'control' line appears</p> <p>Invalid— the control line fails to appear, usually due to too little oral fluid collected.</p>



Nationally Recognised **HLTPAT005 Collect Specimens for Drugs of Abuse Testing** training is available to ensure onsite drug & alcohol screening personnel are correctly trained to use and administer drug & alcohol test equipment under **Australian Standards AS/NZS4308, AS/NZS4760 & AS3547**. This course has been developed to assist our clients in adhering to their legal responsibilities in the workplace and ensure results stand up in a Court of Law. Available via classroom and distance learning. For further details please see our training page.