



Onsite Saliva Swipe 5

The Onsite Saliva Swipe 5 oral fluid drug screening test is the quickest and most advanced oral fluid test on the market today. Utilising Onsite Diagnostics' quick-wicking technology means minimal saliva is required and saliva migrates up the test strips quicker than any other oral fluid test on the market.

Faster than the roadside Police drug tests!

Ideally suited to pre-employment, correctional services, custodial testing, random workplace testing and any situation where drug screen to AS4760 is required.

The Onsite Saliva Swipe 5 is specifically designed to suit **Australian Standard 4760:2006** cut off levels.

The ideal test choice when 'current impairment' screening is required.

- SLIM, ERGONOMIC DESIGN
- MINIMAL ORAL FLUID REQUIRED
- CLEAR, RAPID RESULTS IN MINUTES!
- COST EFFECTIVE TESTING
- NO TOILET FACILITIES REQUIRED
- NO GENDER ISSUES
- TESTS FOR CURRENT IMPAIRMENT!

ONSITE SALIVA SWIPE 5 TESTS FOR THE FOLLOWING:

AMP ng/mL (Amphetamines)

MET 50 ng/mL (Methamphetamine)
Methamphetamines eg. Ice aka Crystal Meth

COC 50 ng/mL (Cocaine)

OPI 50 ng/mL (Opiates)

THC (Parent) 25 ng/mL (Marijuana)

THC (Metabolites) 12 ng/mL (Marijuana)

Ease-of-collection

Easy to use, convenient, one step oral saliva test. Simply place the saliva swab in the donor's mouth and swab under the tongue. Within 1 minute the saliva will

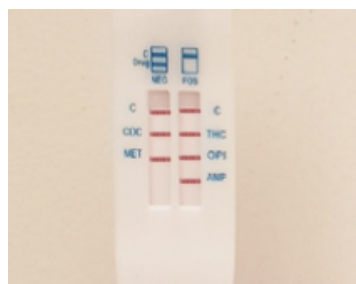


Australian Designed

begin running up the test strips. A purple dye will indicate it is working. Replace the end cap and place the Saliva Swipe 6 on a flat surface. Wait for the results to appear.

Clear, Rapid Results

Results are clear and easy to read and appear within 2-3 minutes.



Test Integrity

Integrity of the saliva sample is maintained due to minimal handling and exposure. The saliva sample is observed at all times preventing adulteration by the test subject.

Test control lines confirm the saliva sample has flowed correctly up the test



Order Code (Box of 25): OD-074

strips and the test is complete.

Comprehensive instructions and procedure cards are included to ensure testing is conducted correctly.

Result Confirmation

Any presumptive-positive results should be confirmed via LC/MS at a certified NATA laboratory using a second saliva sample.

Quality Controls

Test control lines use colloidal gold technology with superior sensitivity, accuracy and precision. Cross-reactivity is pretested against most drugs and other substances.

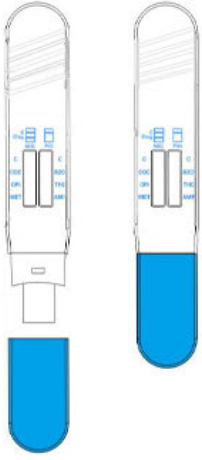
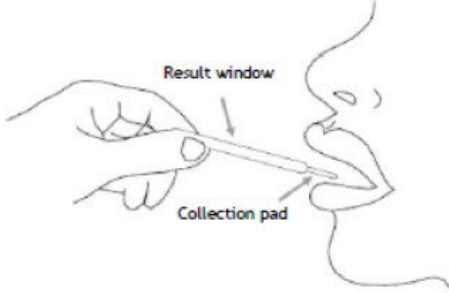
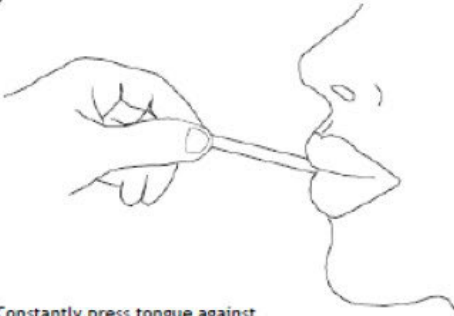
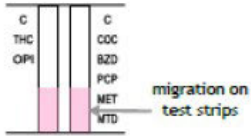
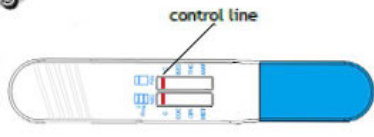


Australian Designed

Cut-off levels are set for the Australian market reducing discrepancies between initial onsite testing and laboratory confirmation test results.

Custom Test Kits

Test kits can be custom designed to suit all workplace applications, incorporating up to 8 drugs in one saliva test.

Onsite Saliva Swipe 5 Drug Test Procedure

<p>1</p>  <p>Remove test device from pouch. Write ID on device then uncap to expose collection pad.</p>	<p>2</p>  <p>Result window Collection pad</p> <p>Insert collection pad into mouth with test device inserted under the tongue and hold in place with your hand at a <u>slightly</u> upward angle (approximately 15° angle).</p>
<p>3</p>  <p>Constantly press tongue against top of collection pad until removed from mouth. Do not bite, chew or pull on collection pad.</p>	<p>4</p> <p>Leave in mouth, under the tongue, for 1 minute then remove. If migration (pink color) has not reached first analyte reinsert into mouth for another 30 seconds and remove. Repeat in 30 second increments as required. Not to exceed 2 minutes 30 seconds.</p>  <p>migration on test strips</p>
<p>5</p>  <p>control line</p>  <p>REPLACE CAP. Place device on flat surface. Start timing when C (control) line appears on each strip</p>	<p>6</p> <p>Read results at 5-7 minutes after the C line appears on EACH strip. Do not compare one line intensity to another. Do NOT read after 7 minutes.</p>  <p>NEGATIVE POSITIVE INVALID</p> <p>Negative results— Indicated by the presence of 2 lines. No matter how dark/light</p> <p>Presumptive positive— only the top 'control' line appears</p> <p>Invalid— the control line fails to appear, usually due to too little oral fluid collected.</p>



Nationally Recognised Certified Drug & Alcohol Screening Officer training is available to ensure onsite drug & alcohol screening personnel are correctly trained to use and administer drug & alcohol test equipment under **Australian Standards 4308, 4760 & AS3547**. This course has been developed to assist our clients in adhering to new legislative changes. Available via classroom and distance learning. For further details please see our training page.