



# Saliva Check 6 Advanced

The **Onsite Saliva Check 6 Advanced** saliva drug screening test incorporates the latest drug groups from **Australian Standard 4760:2019**. One of the first rapid tests on the Australian market designed to the **NEW 2019 AUSTRALIAN STANDARD**.

Our new design also requires much less saliva to activate which means faster results ! Saliva testing is the ideal test choice when 'current impairment' screening is required.

Benefits of Saliva Check 6 Advanced :

- SALIVA COLLECTION INDICATOR
- CLEAR, RAPID RESULTS IN MINUTES!
- SMALLER SIZE—ONLY 7 x 3 cm
- REQUIRES LESS SALIVA THAN OTHER TESTS



**Australian Designed**

## ONSITE SALIVA CHECK 6 ADVANCED TESTS FOR THE FOLLOWING:

- AMP 50 ng/mL** (Amphetamine)
- MET 50 ng/mL** (Methamphetamine)
- COC 50 ng/mL** (Cocaine)
- OPI 50 ng/mL** (Opiates)
- THC (Parent) 15 ng/mL** (Marijuana)
- OXY 40 ng/mL** (Oxycodone)

## Ease-of-collection

Easy to use , convenient, one step oral saliva test. Simply collect the saliva sample with the test swab until the colour indicator turns red, insert the test swab into the test chamber and twist seal the lid. The saliva will run up the test strips.



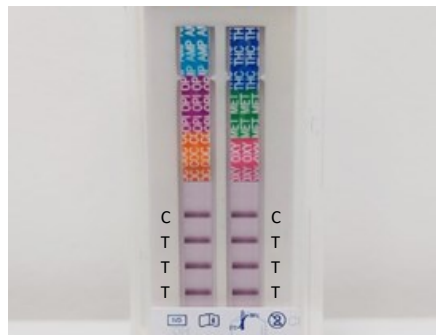
Order Code (Box of 25): **OD-080**

## Quicker Results than Other Tests

All drug test lines are combined on 2 test strips which requiring a third of the saliva to activate than a standard 6 panel drug test.

## Clear Results

After collection remove the privacy strip and read the test result lines. Each drug group is colour coded for ease of recognition. Results are clear and easy to read and appear within 2-3 minutes.



## Quality Controls

Test control lines use colloidal gold technology with superior sensitivity, accuracy and precision. Cross-reactivity is pretested against most drugs and other substances.

## Test Integrity

Integrity of the saliva sample is maintained due to minimal handling and exposure. The saliva sample is observed at all times preventing adulteration by the test subject.

Test control lines confirm the saliva sample has flowed correctly up the test strips and the test is complete.

Comprehensive instructions and procedure cards are included to ensure testing is conducted correctly.

## Result Confirmation

Any presumptive-positive results should be confirmed via LC/MS at a certified NATA laboratory using a second saliva sample.

## Australian Designed

Cut-off levels are set for the Australian market reducing discrepancies between initial onsite testing and laboratory confirmation test results.

# Onsite Saliva Check 6 Advanced Test Procedure

- Before use, check the expiry date is still valid. Ensure the test and specimen are at room temperature (15-25°C) before use. Check the donor has not placed anything in their mouth 10 minutes prior to collection. This includes food, water, gum and tobacco.
- The oral fluid specimen should be collected using the collector provided with the kit. No other collection devices should be used with this drug test.

Manufacturer Details:

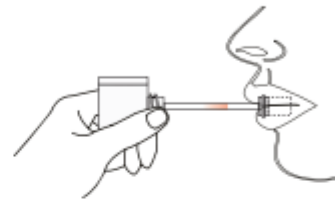


Customer Service: 1300 667 107  
www.onsitedrugtesting.com.au

**1**

Remove the collection swab from the sealed pouch and use immediately. Gently rub the inside cheeks 5-10 times, gums 5-10 times and surface of tongue 5-10 times. Place the swab underneath the tongue where saliva pools. Once sufficient saliva has been collected the indicator on the stick of the collector will turn pink/red.

It is critical that the collection swab is held horizontally and NOT downwards during collection, otherwise the colour indicator will activate prematurely.

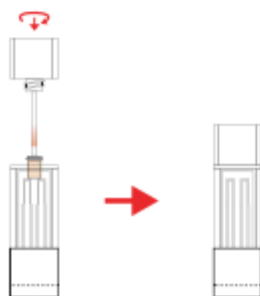


**NOTE:**

If after 7 minutes, the coloured saliva collection indicator has not turned pink/red then proceed with Step 2.

**2**

Place the test chamber upright on a clean flat surface. Remove the collection swab from the donor's mouth ensuring they do not chew or suck the swab upon removal. Place it firmly and securely into the collection chamber by twisting the end clockwise to tighten the lid. This squashes the sponge releasing the saliva into the test well.



**3**

Keep the test device upright while the saliva is running up the strips. Peel off the label to reveal the results and check the saliva is running.

If the saliva does not run up the strips, remove the bottom label to check the saliva well has saliva in it. Note: thick saliva can run very slowly, especially if the donor is dehydrated



**4**

Read the drug test results at 10 minutes.

Read the alcohol saliva pad at 3 minutes (if applicable to your test)

Compare the below alcohol colour chart to the alcohol pad for results.

**DO NOT INTERPRET ANY RESULTS AFTER 1 HOUR.**



Nationally Recognised **HLTPAT005 Collect Specimens for Drugs of Abuse Testing** training is available to ensure onsite drug & alcohol screening personnel are correctly trained to use and administer drug & alcohol test equipment under **Australian Standards AS/NZS4308, AS/NZS4760 & AS3547**. This course has been developed to assist our clients in adhering to their legal responsibilities in the workplace and ensure results stand up in a Court of Law. Available via classroom and distance learning. For further details please see our training page.