



Onsite Saliva Swipe 8 Advanced Plus Alcohol

The Onsite Saliva Swipe 8 Advanced Plus Alcohol saliva drug and alcohol screening test is specifically designed to suit **Australian Standard 4760:2019** cut off levels.

The ideal test choice when 'current impairment' screening is required.

Now incorporating **K2 test for Synthetic Marijuana** and **KET Ketamine**.

- EASY-TO USE AND CONVENIENT
- CLEAR, RAPID RESULTS IN MINUTES!
- ALL-IN-ONE COLLECTION AND RESULTS
- NO TOILET FACILITIES REQUIRED
- NO GENDER ISSUES

ONSITE SALIVA SWIPE 8 ADVANCED

Plus Alcohol

TESTS FOR THE FOLLOWING:

AMP/MET 50 ng/mL (Amphetamine/
Methamphetamine)

BZO 50 ng/mL (Benzodiazepines)

COC 50 ng/mL (Cocaine)

OPI 50 ng/mL (Opiates)

OXY 40ng/ml (Oxycodone)

THC (Parent) 15 ng/mL (Marijuana)

K2 25 ng/mL (Synthetic Marijuana)

KET 50 ng/mL (Ketamine)

ALCOHOL $\geq 0.02\%BAC$

Minimal Saliva Required

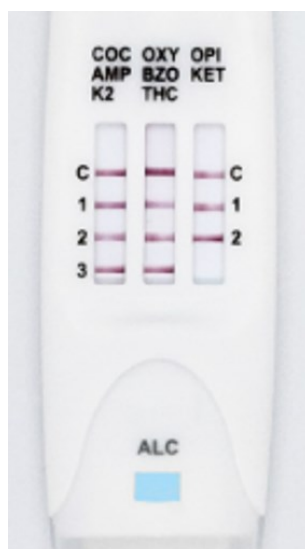
The all-in-one nature of the Saliva Swipe 8 Advanced + alcohol means a smaller saliva sample is required. The saliva does not need to be transferred to a separate test chamber and only 3 strips are saturated with saliva instead of 8 or 9, thus, less saliva is needed to obtain results for drugs and alcohol.

Quicker Results than Other Tests

All drug test lines are combined on 3 test strips requiring a third of the saliva to activate than an 8 panel drug test. Colour reactive swab for alcohol test.

Ease-of-collection

Easy to use one step oral saliva test. Simply insert the test swab into the mouth for 3 minutes. Place the test on a flat surface and the saliva will run up the test strips providing results.



Clear Results

Results are clear and easy to read and appear within 2-3 minutes. Drug test lines are clearly labelled. The alcohol test window colour is compared with the colour chart to determine the approx. alcohol level.

**8 DRUGS
+ ALCOHOL
RESULTS IN 2-3
MINUTES!**

Now Available With
**KETAMINE and K2
(Synthetic THC)**

**Kronik
Synthetic Marijuana**

Set to Australian Standard AS4760:2019 cut-off levels

Order Code (Box of 25): **OD-201**

Quality Controls

Test control lines use colloidal gold technology with superior sensitivity, accuracy and precision. Cross-reactivity is pretested against most drugs and other substances. Test control lines confirm the saliva sample has flowed correctly up the test strips and the test is complete.

Test Integrity

Integrity of the saliva sample is maintained due to minimal handling and exposure. The saliva sample is observed at all times preventing adulteration by the test subject. Comprehensive instructions and procedure cards are included to ensure testing is conducted correctly.

Result Confirmation

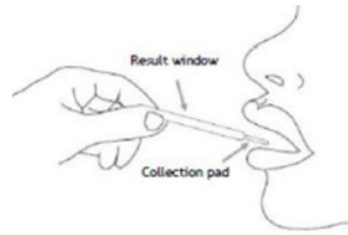
Any presumptive-positive results should be confirmed via LC/MS at a certified NATA laboratory using a second saliva sample. Australian Designed Cut-off levels are set for the Australian market reducing discrepancies between initial onsite testing and laboratory confirmation test results.

Onsite Saliva Swipe 8 Advanced + ALC Test Procedure

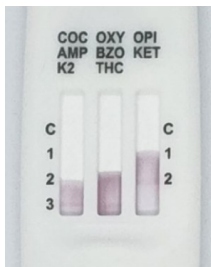


Take the test device out of the pouch and remove the protective end-cap to expose the collection swab.

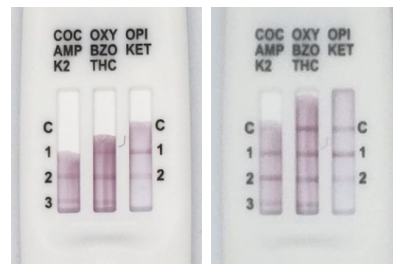
Place the collection swab in the donor's mouth.



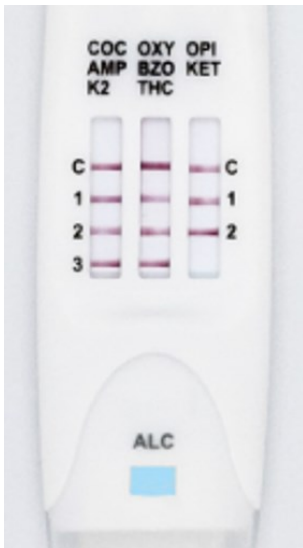
Rub the collection swab against the cheek and tongue gently in a circular motion about 10 times. Then place the collection swab underneath the tongue for 1-3 minutes with the test panel facing upwards.



Keep the test in the mouth until the red/purple coloured dye shows up in all test windows. This should take less than 5 minutes. If it takes longer, then it indicates the donor has very thick saliva and we recommend you keep the test in their mouth until the control lines appear.



Place the end-cap back on the test. Lay the test on a flat surface while it activates. Read results at 5 minutes.



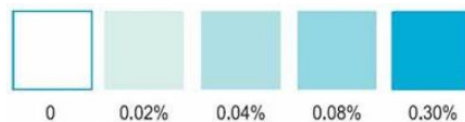
TEST INTERPRETATION

Read results at 5 minutes or later, once all 3 control lines have activated. Do not interpret after 15 minutes.

The Control line 'C' at the top of each strip indicates the specimen has saturated the whole test strip.

Each number below the C line (1, 2, 3) relates to the drugs listed above each test strip.
Eg: Strip 1: #1 = COC, #2 = AMP #3 = K2

The Alcohol test pad will change colour for levels above 0.02%BAC.
Refer to the colour card to interpret the approx. alcohol level.



Nationally Recognised HLTPAT005 Collect Specimens for Drugs of Abuse Testing training course is available to ensure onsite drug & alcohol screening personnel are correctly trained to use and administer drug & alcohol test equipment under **Australian Standards 4308:2008, 4760:2019 & AS3547**. This course has been developed to assist our clients in adhering to new legislative changes. Available via classroom and distance learning. For further details please see our training page.



Customer Service: 1300 667 107
PO Box 164,
Burleigh Heads, QLD 4220

Order Code (Box of 25): OD-201